



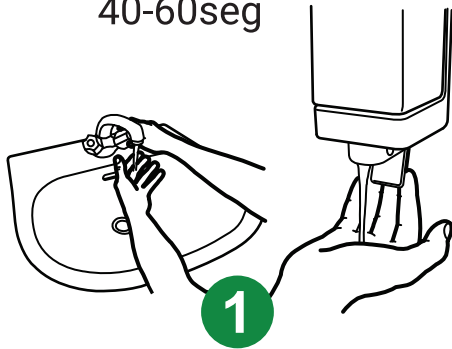
La seguridad está en tus manos

AGUA Y JABÓN

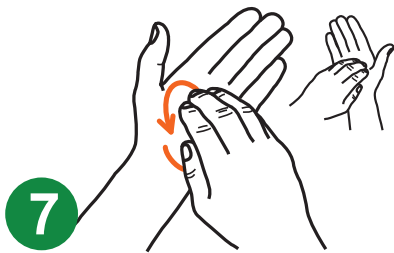
- Manos visiblemente sucias
- Manchadas con fluidos corporales
- Después de usar el inodoro
- Sospecha de exposición a patógenos



40-60seg



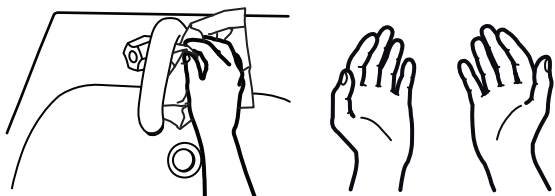
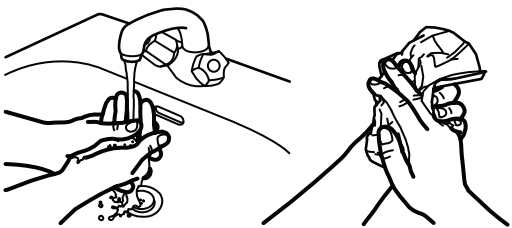
1



7



6



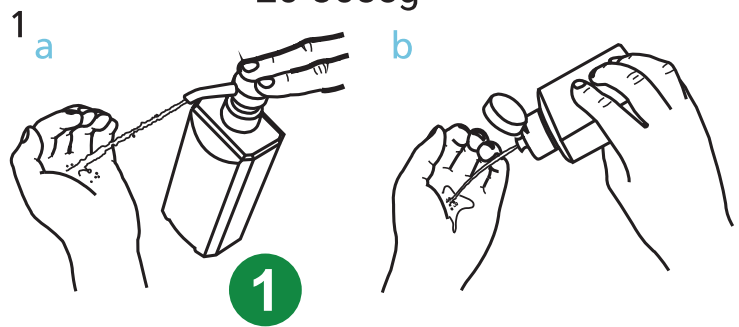
8

SOLUCIÓN HIDROALCÓHOLICA

- Manos no visiblemente sucias
- Crema hidratante al final de la jornada



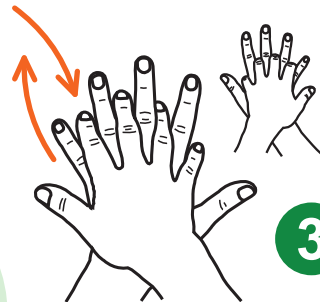
20-30seg



1



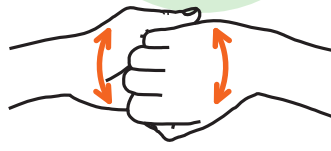
2



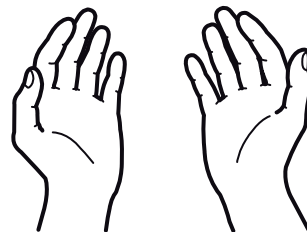
3



4



5



8



Fraternidad
Muprespa